



**STANDARD WEAR
BARS**

PRODUCT DATA SHEET

DRAWING NO:

REV NO:

Phone: +1 469-269-2500
Fax: +1 469-200-8821

Web: www.cqmsrazer.com/usa

NOTE

Function

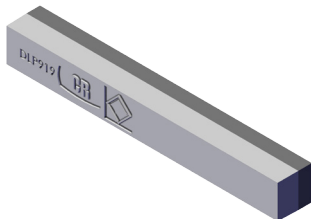
To reduce or eliminate wear in localized areas and in so doing, provide continued production capability to plant and equipment in a cost effective manner.

Features

- 700 Brinell hardness Chrome Moly white iron metallurgically bonded to mild steel provides extreme levels of both abrasion and impact resistance.
- Easy to use and install (refer our recommended welding procedure).
- Ideally suited for in situ repairs and/or installation into localized areas of extreme wear.

Benefits

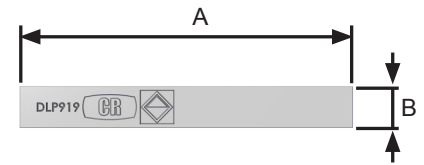
- Provides up to 6 times the life of conventional wear plates.
- Most popular for replacing hard facing and clad plate.
- Wear Bars give the ability to change out worn sections only rather than replacing whole sheets or plates.
- Used in almost any application where abrasive wear is causing lost production through machine down time.



ISOMETRIC VIEW



SIDE VIEW



FRONT VIEW

PART No.	DIMENSIONS in/mm				DESCRIPTION	MASS (lbs/kg)
	A	B	C	D		
DLP4	11.8/ 300	1.5/ 38	1/ 25	0.31/ 8	STANDARD WEAR BAR	6.6/ 3
DLP125	9/ 230	2/ 50	1.5/ 38	0.47/ 12	STANDARD WEAR BAR	8.8/ 4
DLP184	1.9/ 150	2.9/ 75	1.1/ 29	0.4/ 10	STANDARD WEAR BAR	6.6/ 3
DLP201A	17/ 432	2/ 50	1.5/ 38	0.47/ 12	STANDARD WEAR BAR	17.6/ 8
DLP295	6/ 153	1.5/ 38	1/ 25	0.23/ 6	STANDARD WEAR BAR	2.2/ 1
DLP337	5/ 128	2/ 50	1.5/ 38	0.47/ 12	STANDARD WEAR BAR	4.4/ 2
DLP343	7.5/ 190	2/ 50	1.5/ 38	0.47/ 12	STANDARD WEAR BAR	8.8/ 4
DLP352	8.1/ 206	8/ 203	1.5/ 38	0.8/ 20	STANDARD WEAR BAR	39.7/ 18
DLP369	8.2/ 210	2/ 50	1.5/ 38	0.47/ 12	STANDARD WEAR BAR	8.8/ 4
DLP392	9.5/ 241	4/ 100	1.5/ 38	0.8/ 20	STANDARD WEAR BAR	24.2/ 11
DLP453	11.5/ 294	2/ 50	1.5/ 40	0.4/ 10	STANDARD WEAR BAR	13.2/ 6
DLP619	1.9/ 150	2.9/75	2/ 50	0.4/ 10	STANDARD WEAR BAR	11/ 5
DLP919	7.9/ 200	1/ 25	0.6/ 15	0.4/ 10	STANDARD WEAR BAR	2.2/ 1
DLP1101	1.9/ 150	2/ 50	1.5/ 40	0.4/ 10	STANDARD WEAR BAR	6.6/ 3
DLP1191	11.8/ 300	1/ 25	0.6/ 15	0.4/ 10	STANDARD WEAR BAR	2.2/ 1
DLP2017	11.8/ 300	2/ 50	1.5/ 40	0.4/ 10	STANDARD WEAR BAR	13.2/ 6
DLP2199	2.5/ 65	2/ 50	1.5/ 38	0.47/ 12	STANDARD WEAR BAR	2.2/ 1
DLP2265	4.5/ 115	2/ 50	1.5/ 38	0.47/ 12	STANDARD WEAR BAR	4.4/ 2
DLP5008	11.8/ 302	4/ 100	2.9/ 75	1/ 25	STANDARD WEAR BAR	48.5/ 22
DLP5009	17.8/ 454	4/ 100	2.9/ 75	1/ 25	STANDARD WEAR BAR	72.7/ 33