



SKID BARS

PRODUCT DATA SHEET

DRAWING NO: PF-0008-1

REV NO: A

Phone: +1 469-269-2500
Fax: +1 469-200-8821

Web: www.cqmsrazer.com/usa

NOTE

Function

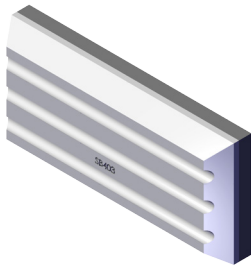
Designed to protect and extend the life of mining and quarrying heavy duty buckets.

Features

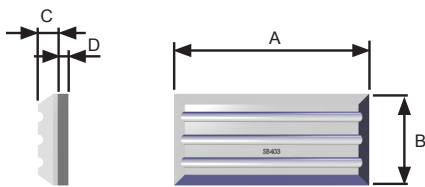
- Available in straight, herringbone or domed styles designed to fit your machine. Talk to us as to how we can design and suggest the ideal layout on your machine and conditions.
- 700 Brinell hardness Chrome Moly white iron metallurgically bonded to mild steel provides extreme levels of both abrasion and impact resistance.

Benefits

- Skid bars are far superior in design and wear life when compared to standard Q&T Wear plates or bolt on skid pads commonly used on most high capacity, heavy duty buckets.
- High capacity, heavy duty buckets for wheel loaders, excavators and dippers.

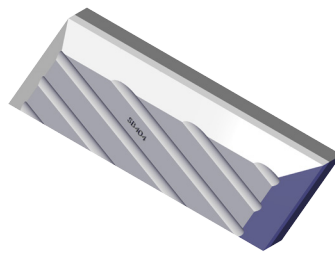


RECTANGULAR - ISOMETRIC VIEW

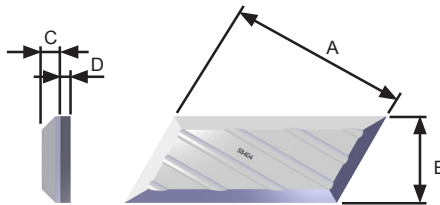


SIDE VIEW

FRONT VIEW



HERRINGBONE - ISOMETRIC VIEW

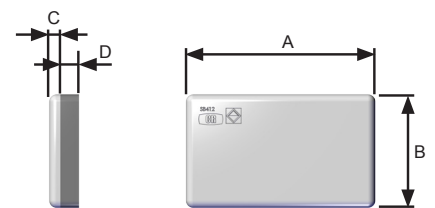


SIDE VIEW

FRONT VIEW



DOMED EDGE - ISOMETRIC VIEW



SIDE VIEW

FRONT VIEW

PART No.	DIMENSIONS in/mm				DESCRIPTION	MASS (lbs/kg)
	A	B	C	D		
SB205	11/ 279	2.9/ 75	0.7/ 20	0.47/ 12	RECTANGULAR SKID BAR	11/ 5
SB403	8.4/ 214	3.9/ 101	0.86/ 22	0.47/ 12	RECTANGULAR SKID BAR	11/ 5
SB406	11.8/ 302	3.9/ 100	0.86/ 22	0.47/ 12	RECTANGULAR SKID BAR	15.4/ 7
SB409	6/ 154	3.9/ 101	0.86/ 22	0.47/ 12	RECTANGULAR SKID BAR	8.8/ 4
SB404	8.4/ 214	3.9/ 101	0.86/ 22	0.47/ 12	HERRINGBONE SKID BAR	13.2/ 6
SB405	8.4/ 214	3.9/ 101	0.86/ 22	0.47/ 12	HERRINGBONE SKID BAR	13.2/ 6
SB407	11.8/ 302	3.9/ 101	0.86/ 22	0.47/ 12	HERRINGBONE SKID BAR	17.6/ 8
SB408	11.8/ 302	3.9/ 101	0.86/ 22	0.47/ 12	HERRINGBONE SKID BAR	17.6/ 8
SB410	6/ 154	3.9/ 101	0.86/ 22	0.47/ 12	HERRINGBONE SKID BAR	8.8/ 4
SB411	6/ 154	3.9/ 101	0.86/ 22	0.47/ 12	HERRINGBONE SKID BAR	8.8/ 4
SB412	9.8/ 250	5.9/ 150	0.7/ 20	1/ 25	DOMED EDGE SKID BAR	24.2/ 11
SB413	7.8/ 200	5.9/ 150	0.7/ 20	1/ 25	DOMED EDGE SKID BAR	22/ 10
SB414	9.8/ 250	9.8/ 250	0.7/ 20	1/ 25	DOMED EDGE SKID BAR	46.2/ 21