



**ROCKBOX LINERS**  
(700BHN - MK2)

**PRODUCT DATA SHEET**

**DRAWING NO: PF-0005-1**

**REV NO: A**

Phone: +1 469-269-2500  
Fax: +1 469-200-8821

Web: [www.cqmsrazer.com/usa](http://www.cqmsrazer.com/usa)

NOTE

**Function**

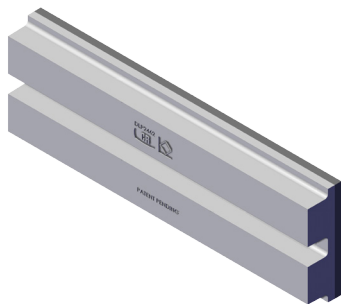
To reduce or eliminate wear and in so doing, provide continued production capability to plant and equipment in a cost effective manner.

**Features**

- Available in four standard sizes but can be manufactured to any shape or size.
- As the white iron component is individually cast it is easy to incorporate angled edges or intricate bevels on liners so joints are neat and to maximise wear protection on the structure being protected.
- Can be supplied with stud bolts attached or with cast in bolt holes for ease of installation.
- MK2 RockBox Liners are manufactured using a single cast white iron liner which incorporates a minimum of 10 mm wear protection between the 40 mm high ribs.

**Benefits**

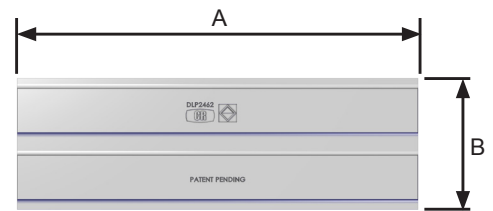
- MK2 RockBox Liners are superior in design and wear life to conventional RockBox Liners or RockBox assemblies using individual multiple wear bars.
- The design offers wear protection in an area which can be subject to wash out and premature failure in conventional liners.
- Gives the ability to change out worn sections only rather than replacing entire sheets or plates.
- Reduced weight compared to a solid smooth liner.
- Suitable for use in bins, hoppers, chutes and other transfer points.



ISOMETRIC VIEW



SIDE VIEW



FRONT VIEW

PART No.	DIMENSIONS in/mm				DESCRIPTION	MASS (lbs/kg)
	A	B	C	D		
DLP2460	11.8/ 300	11.8/ 300	1.6/ 40	0.4/ 10	ROCKBOX LINER	61.7/ 28
DLP2461	5.82/ 148	11.8/ 300	1.6/ 40	0.4/ 10	ROCKBOX LINER	30.9/ 14
DLP2462	17.8/ 452	5.82/ 148	1.6/ 40	0.4/ 10	ROCKBOX LINER	46.3/ 21
DLP2463	11.8/ 300	5.82/ 148	1.6/ 40	0.4/ 10	ROCKBOX LINER	30.9/ 14