



**MICROLEDGES**

**PRODUCT DATA SHEET**

**DRAWING NO: PF-0007-1**

**REV NO: B**

Phone: +1 469-269-2500  
 Fax: +1 469-200-8821

Web: www.cqmsrazer.com/usa

NOTE

**Function**

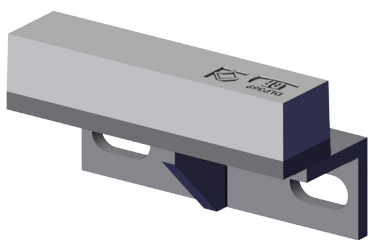
Microledges were developed specifically for chutes, bins, transfer points and hoppers that handle and store fine crushed ore.

**Features**

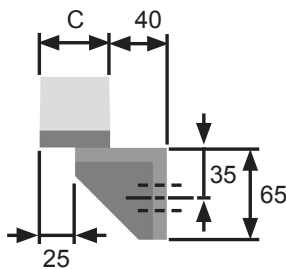
- Cost effective wear solution, and easy to install.
- 700 Brinell hardness Chrome Moly white iron metallurgically bonded to mild steel provides extreme levels of both abrasion and impact resistance.

**Benefits**

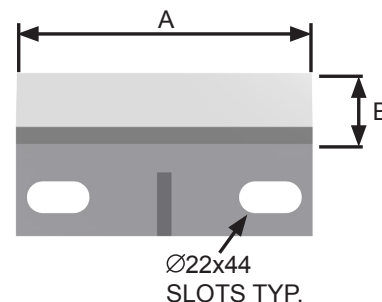
- Creates a 'dead box' effect in these applications, extending the maintenance life of chutes, bins, transfer points and hoppers with utilising the ore on ore wear effect.
- Reduces the need for added wear plate inventory and costs in these applications.
- Suitable for use in bins, hoppers, chutes and other transfer points. Each installation requires a layout and pattern specific to the customer application.



ISOMETRIC VIEW



SIDE VIEW



FRONT VIEW

PART No.	DIMENSIONS in/mm			DESCRIPTION	MASS (lbs/kg)
	A	B	C		
SDP296	7.48/ 190	2/ 50	2/ 50	MICROLEDGE	11/ 5
SDP297	9/ 230	2/ 50	2/ 50	MICROLEDGE	15.4/ 7
SDP298	17/ 432	2/ 50	2/ 50	MICROLEDGE	26.4/ 12
SDP299	8.2/ 210	2/ 50	2/ 50	MICROLEDGE	13.2/ 6
SDP304	5/ 128	2/ 50	2/ 50	MICROLEDGE	6.6/ 3