



GRIZZLY BARS

PRODUCT DATA SHEET

DRAWING NO: PF-0006-1

REV NO: A

Phone: +1 469-269-2500
 Fax: +1 469-200-8821

Web: www.cqmsrazer.com/usa

NOTE

Function

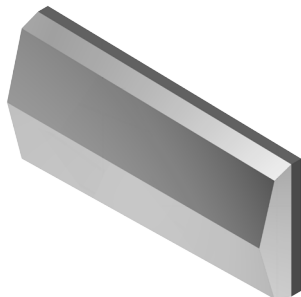
To reduce or eliminate wear in localised areas and in so doing, provide continued production capability to plant and equipment in a cost effective manner.

Features

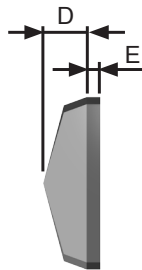
- Grizzly caps and bars are easy to use and install (refer to our recommended welding procedure).
- Grizzly caps and bars can be stud bolted or through bolted to suit your fitment needs.
- 700 Brinell hardness Chrome Moly white iron metallurgically bonded to mild steel provides extreme levels of both abrasion and impact resistance.

Benefits

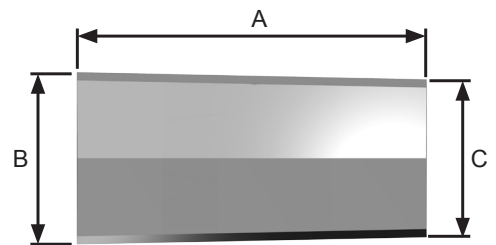
- Suitable for use in mines, quarries and sinter plants where crushing, grinding or screening processes cause wear and abrasion.
- Provides up to 6 times the life of conventional wear plates.
- Most popular for replacing hard facing and clad plate.
- Grizzly bars provide the ability to change out worn sections only, rather than replacing whole sections thus helping to keep maintenance costs down.
- Offers a very cost effective method of extending wear life of the machinery you want protected.



ISOMETRIC VIEW



SIDE VIEW



FRONT VIEW

PART No.	DIMENSIONS in/mm					DESCRIPTION	MASS (lbs/kg)
	A	B	C	D	E		
DLP2067	12/ 305	5.9/ 150	1.6/ 40	1.5/ 38	0.47/ 12	TYPE A - 150/50 TAPER	28.6/ 13
DLP2068	12/ 305	5.4/ 138	4.9/ 125	1.5/ 38	0.47/ 12	TYPE A - 150/50 TAPER	26.4/ 12
DLP2069	12/ 305	4.9/ 125	4.4/ 113	1.5/ 38	0.47/ 12	TYPE A - 150/50 TAPER	24.2/ 11
DLP2070	12/ 305	4.4/ 113	3.9/ 100	1.5/ 38	0.47/ 12	TYPE A - 150/50 TAPER	22/ 10
DLP2071	12/ 305	3.9/ 100	3.5/ 88	1.5/ 38	0.47/ 12	TYPE A - 150/50 TAPER	17.6/ 8
DLP2072	12/ 305	3.5/ 88	2.9/ 75	1.5/ 38	0.47/ 12	TYPE A - 150/50 TAPER	15.4/ 7
DLP2073	12/ 305	2.9/ 75	2.5/ 63	1.5/ 38	0.47/ 12	TYPE A - 150/50 TAPER	13.2/ 6
DLP2074	12/ 305	2.5/ 63	2/ 50	1.5/ 38	0.47/ 12	TYPE A - 150/50 TAPER	11/ 5
DLP2075	12/ 305	5.9/ 150	5.5/ 141	1.5/ 38	0.47/ 12	TYPE B - 150/75 TAPER	28.6/ 13
DLP2076	12/ 305	5.5/ 141	5.1/ 131	1.5/ 38	0.47/ 12	TYPE B - 150/75 TAPER	26.4/ 12
DLP2077	12/ 305	5.1/ 131	4.8/ 122	1.5/ 38	0.47/ 12	TYPE B - 150/75 TAPER	24.2/ 11
DLP2078	11.9/ 304	4.7/ 121	4.4/ 113	1.5/ 38	0.47/ 12	TYPE B - 150/75 TAPER	24.2/ 11
DLP2079	12/ 305	4.4/ 112	4/ 102	1.5/ 38	0.47/ 12	TYPE B - 150/75 TAPER	22/ 10
DLP1886	12.2/ 311	3/ 76	2.6/ 66	1.5/ 38	0.47/ 12	TYPE C - 76/38 TAPER	13.2/ 6
DLP1887	12.2/ 311	2.6/ 66	2.2/ 57	1.5/ 38	0.47/ 12	TYPE C - 76/38 TAPER	13.2/ 6
DLP1888	12.2/ 311	2.2/ 57	1.8/ 47	1.5/ 38	0.47/ 12	TYPE C - 76/38 TAPER	11/ 5
DLP1889	12.2/ 311	1.8/ 47	1.5/ 38	1.5/ 38	0.47/ 12	TYPE C - 76/38 TAPER	8.8/ 4